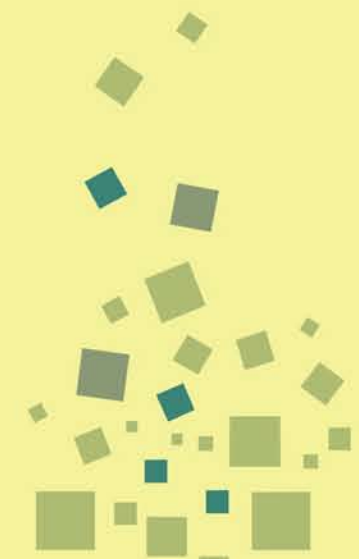
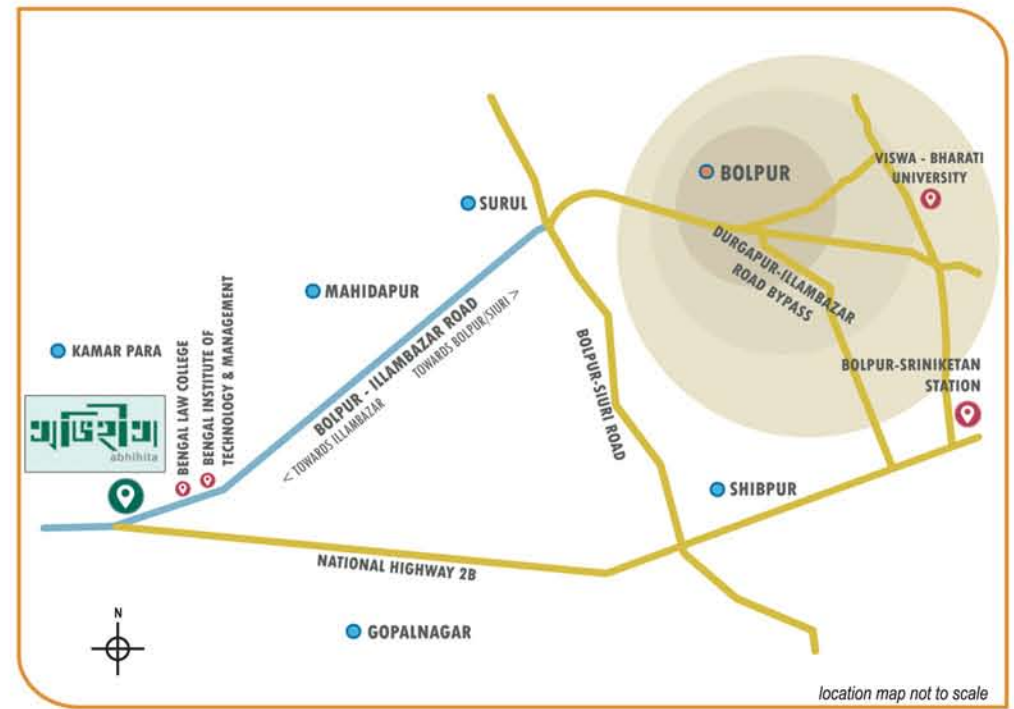
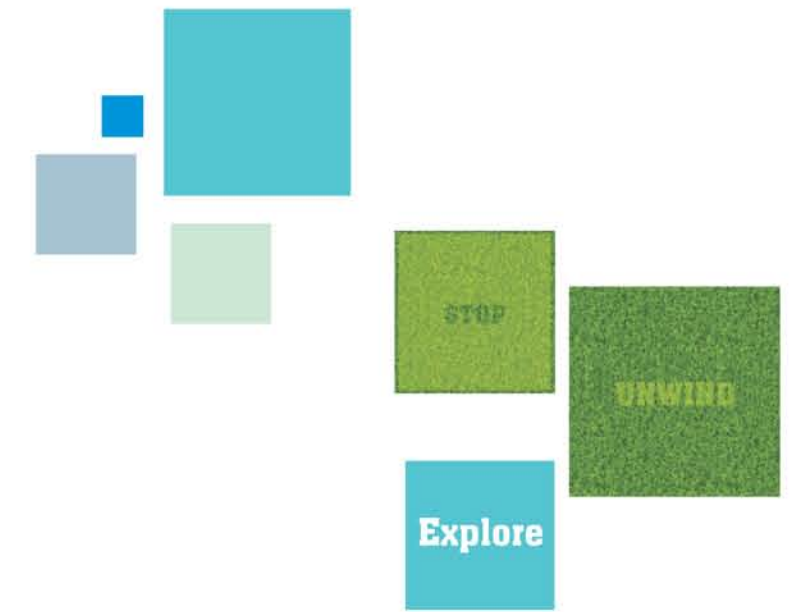


Freedom
lives within
you just let go

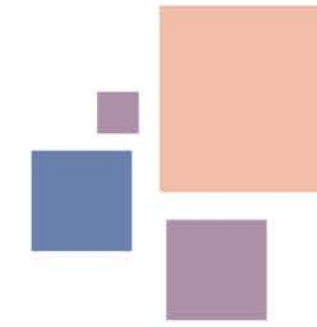


אביהיטה
avihita



Smart Homes at Santiniketan...



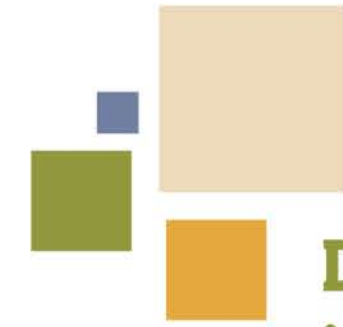


Get the best of both worlds

Rich with all modern amenities, Avihita ensures comfort for your outer being and calm for your inner peace.

Once inside Avihita, you will need some time to discover the entire spread of the layout. The vast openness will surprise you. The greenery will amaze you and you will love to venture outdoors around the complex that is studded with manicured gardens, but do not give away the essence of Santiniketan.



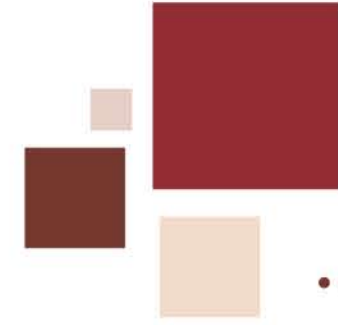


Discover the inside story

Avhita offers comfortable studio apartments, spacious one BHK and gracious Duplex bungalows and row bungalows.

There is one for everyone at Avihita, Choose your home as you require it. Be it cosy yet comfortable studio apartments to luxurious bungalows -you will be spoilt with choice. Come and enjoy a modern living solution that has deep rooted connect with your urban soul.





...Let the drama unfold

A beautiful semi circular well planned open air theater will explore your happiness through fine expressions.

Every expression is unique. You can arrange an open air drama or appreciate a lovely poem recitation. The Open Air Theater will open up all your minds' doors and enrich you culturally.



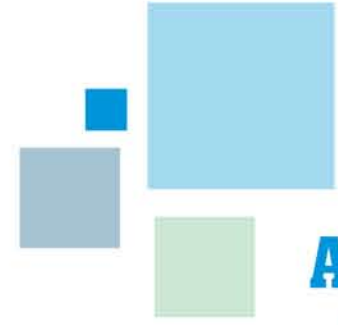


...Live a privileged life

When the evening star will rise, what we will remember are the small acts of self expressions like a cake, a hug, an invitation to walk the talk. Spend your time in the garden under the canopy.

The beautiful solitary canopies, the interplay of lights and shades, the vibrant colors, a gentle air with a genial ambience & rhythms, Make you spend some wonderfully happy moments.



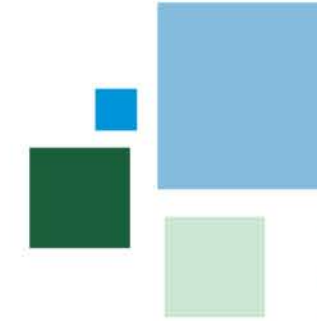


Ananda - the abode of happiness

The row bungalows offer beautiful living space where you can live in seclusion but enjoy community life.

So many travel miles, for so many years, just to feel the inner peace, the joy, the taste of freedom. At Ananda, it is not just a fine place to live in. It's not about 1, 2, and 3 BHK or luxury apartments, it is about the joy of living. Rediscover quality life and be happy.





Advantage to Ace Club Facilities

Sprawling tennis court is the one you will cherish playing a game or two. This is an exclusive club with state-of-the-art facilities.

To define AVIHITA, we want to introduce some wonderful features with you:

- Double Height Badminton Court cum Banquet Hall.
- Large Seating Lounges
- Gymnasium with modern equipments
- Games Room with Table Tennis, Billiards etc.
- Guest Rooms
- Large Swimming Pool
- Kid's Pool
- Audio-Visual Room
- Coffee Shop
- Restaurant.





Splash & Relax Club Amenities

Cool down in the turquoise water of the pool, after hard working days , trim some plants in the garden and pump up in the gym or just sit back to hunt for trails in your mystery novel or to stare at the tremendous night sky...

Because it's so obvious that every mood of yours deserves to be happily satisfied.





- | | |
|-----------------------------|---------------------------------|
| 1 উৎশ
UTSHO | A SWIMMING POOL |
| 2 সুচেতা
SUCHETA | B TENNIS COURT |
| 3 দীপ্তি
DEEPTI | C CHILDRENS' PLAY ZONE |
| 4 প্রফুল্ল
PRAFULLA | D LAWN |
| 5 উচ্ছাস
UCHHAS | E CENTRAL PLAY FIELD |
| 6 প্রভা
PROBHA | F OPEN AIR THEATRE |
| 7 ত্রিষ্টি
TRIPTI | G OPEN CAR PARKING |
| 8 আনন্দ
ANONDO | H PRIVATE LAWNS |
| 9 আবেশ
AABESH | I CANOPY |
| 10 স্বপ্নীল
SWAPNIL | J CLUB ENTRY / EXIT GATE |
| 11 ক্লাব ব্লক
CLUB BLOCK | K RESIDENTIAL ENTRY / EXIT GATE |
| 12 INDIVIDUAL BUNGALOW | |



Amenities & Facilities

- Open and Vast children play zone.
- Play lawns.
- Landscape Gardens.
- Open air theatre.
- Well planned jogging tracks.
- 24 hours trained security and surveillance cameras.
- 24 x 7 water Supply.
- Adequate Parking

Open and vast space

Pollution free environment

Bliss of solitude

Beautiful sight scenes
and vast greenery

Eco friendly regimes

A beautiful combination of simplicity
and aristocracy



Specifications

- Foundation : RCC Foundation
- Structure : RCC Framed Structure
- Walls : 8" & 5" Brick Walls

Flooring & Walls

- Rooms : Vitrified Tiles
- Living Rooms : Vitrified Tiles

Kitchens

- Flooring : Heavy Duty Anti-Skid Tiles
- Kitchen Counter : Granite
- Dado : Ceramic Tiles, Upto 2 Feet Above Counter
- Sink : Stainless Steel

Toilets

- Flooring : Anti-Skid Ceramic Tiles
- Dado : Ceramic Tiles, Upto 7 Feet Height.
- Fixtures : EPWC & Wash Basin of Reputed Brand, White Colour
- Fittings : CP Fittings of Reputed Brand

Doors

- Frames : SAL Timber
- Shutters : 35 mm Thick Good Quality Flush Door
- Main Doors : 35 mm Flush Door with Exterior Veneer Panelling

Windows

- Aluminium Windows with Glass Panels

Internal Finishes

- Wall Putty

External Finishes

- Good Quality Weather-proof Paint / Texture Paint

Electrical

- Concealed Copper Wiring & Modular Switches with Provision for AC, TV & Telephone Points & Geyser Point in Toilets

Lifts

- Lifts in All Buildings Except Row-Bungalows (Ananda)

Others

- Secured Complex with Gated Enclave
- 24 Hours Water Supply
- DG Backup for All Common Area (Internal & External, including Lifts)
- CCTV Controlled Complex to ensure better safety



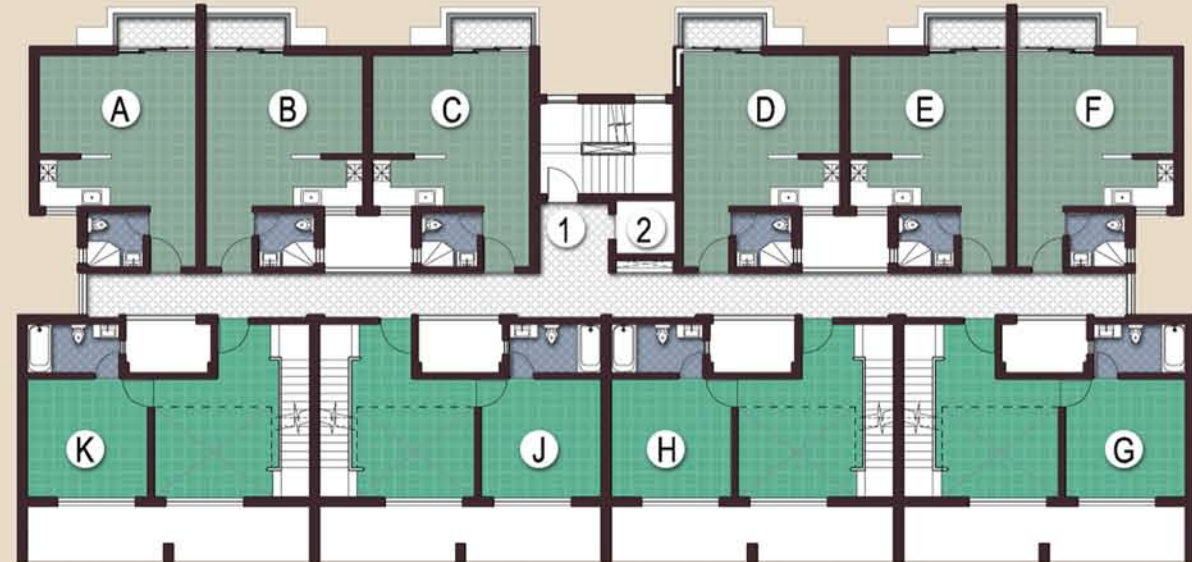
FLOOR PLANS OF SWAPNIL AND AABESH
 স্বপ্নীল ও আবেশ



GROUND FLOOR

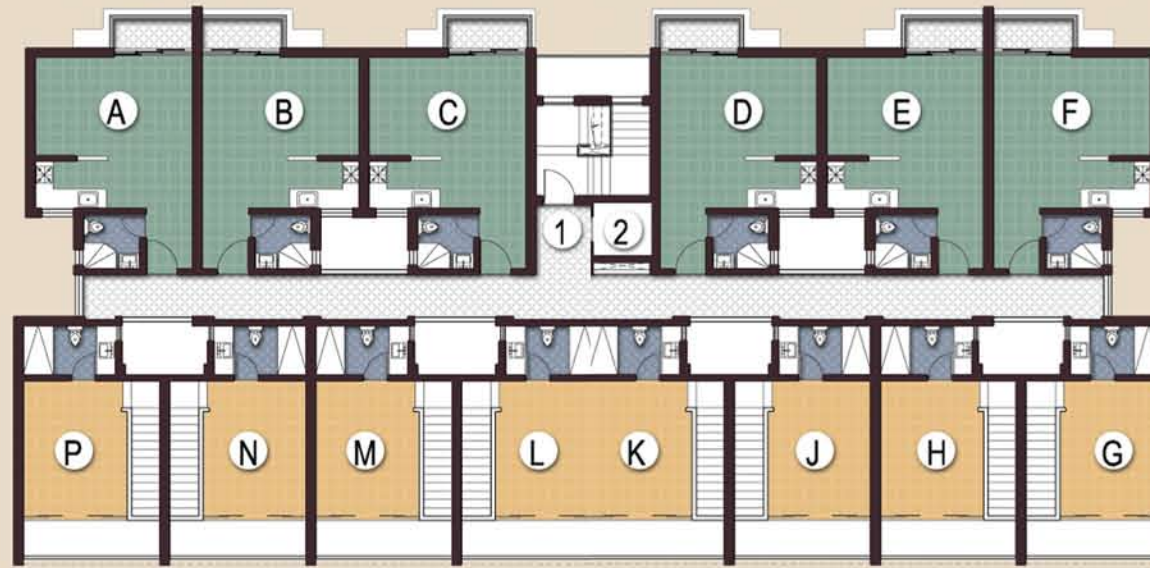
- Layout
 A - F : **STUDIO** Units
 G - P : **DUPLEX WITH LAWN** (Ground & 1st Floors)
 1 : Lift Lobby
 2 : Lift

স্বপ্নীল ও আবেশ



- 3rd FLOOR**
 Layout
 A - F : **STUDIO** Units

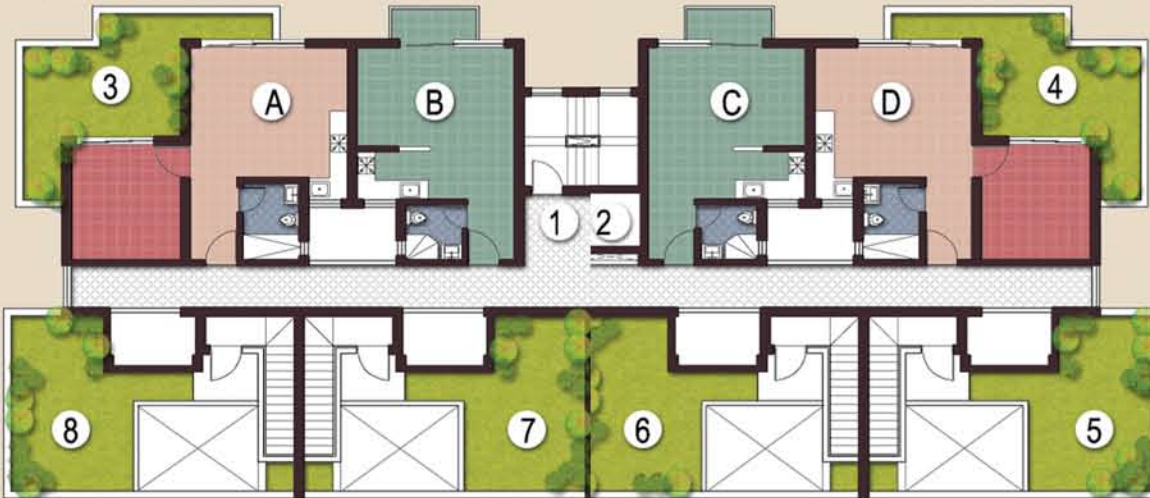
স্বপ্নীল ও আবেশ



1st FLOOR

- Layout (Ground - 1st FLOORS)
 A - F : **STUDIO** Units

স্বপ্নীল ও আবেশ

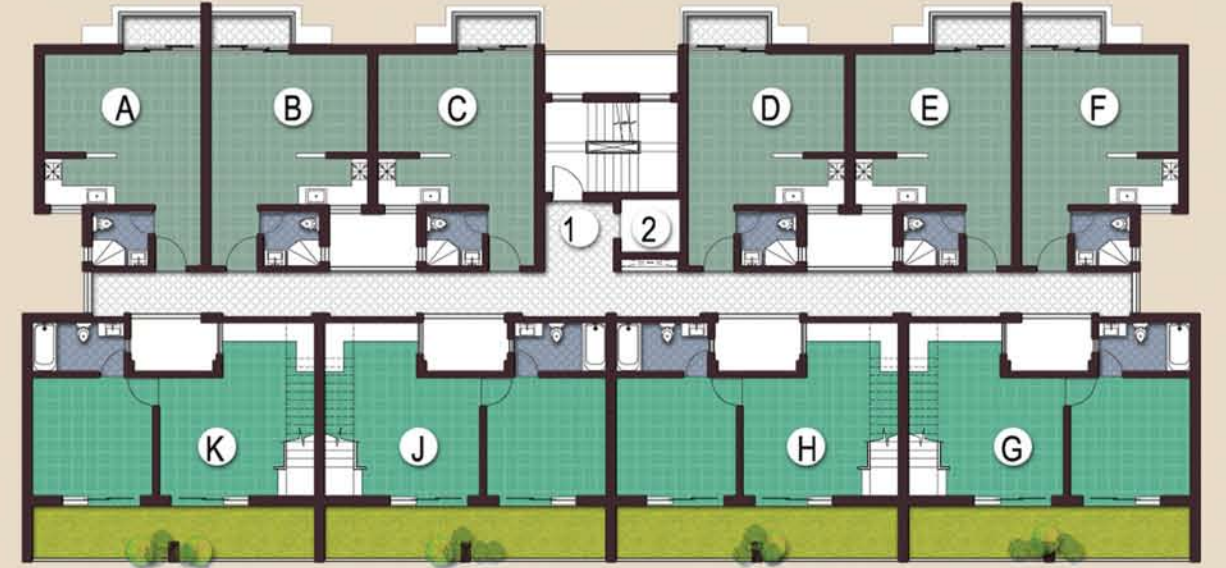


4th FLOOR

- Layout
 A, D : **1 BHK - WITH TERRACE**
 B, C : **STUDIO** Units
 1 : Lift Lobby
 2 : Lift
 3 - 8 : **Open Terraces**

SCALE :
 0'12" = 5'0"

স্বপ্নীল ও আবেশ



2nd FLOOR

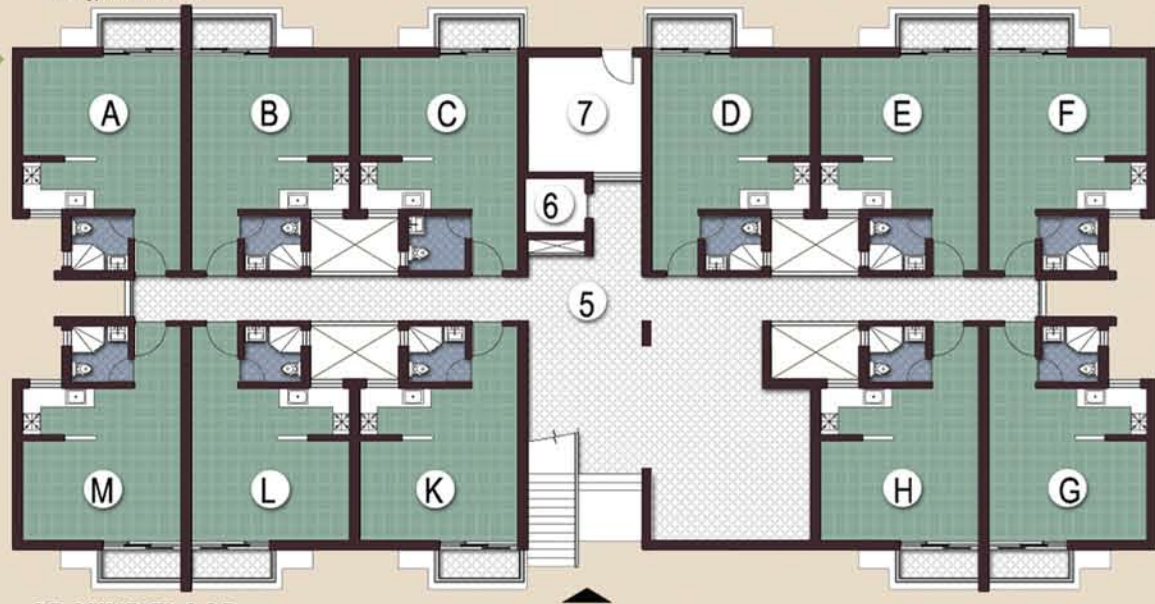
- Layout
 A - F : **STUDIO** Units
 G - K : **DUPLEX WITH TERRACE** (2nd & 3rd Floors)
 1 : Lift Lobby
 2 : Lift

স্বপ্নীল ও আবেশ



KEY PLAN

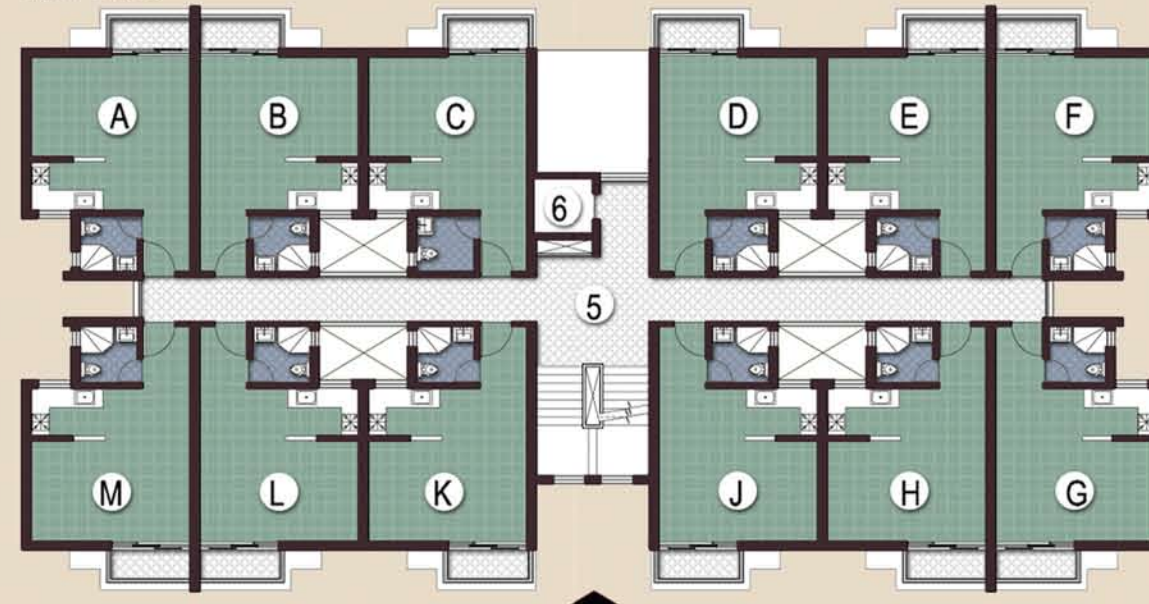
FLOOR PLANS OF PRAFULLA AND TRIPTI
 প্রফুল্ল ও ত্রিপ্তি



GROUND FLOOR

- Layout
 A - M : **STUDIO** Units
 5 : Lift Lobby
 6 : Lift
 7 : Services

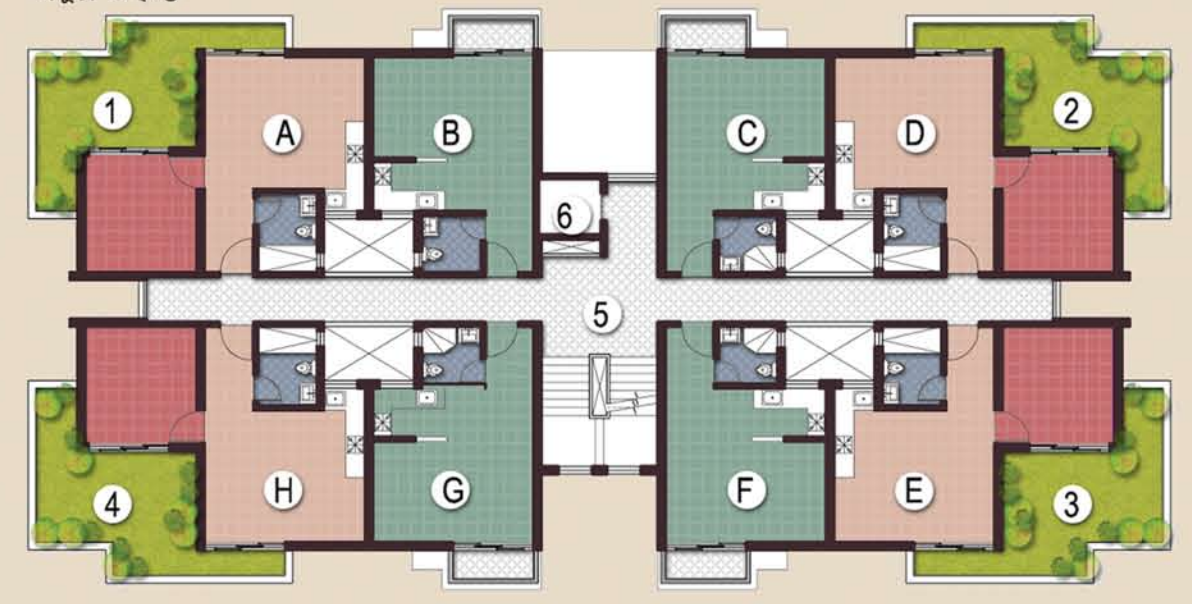
প্রফুল্ল ও ত্রিপ্তি



1st - 3rd FLOORS

- Layout
 A - M : **STUDIO** Units
 5 : Lift Lobby
 6 : Lift

প্রফুল্ল ও ত্রিপ্তি



4th FLOOR

- Layout
 A, D, E, H : **1 BHK - WITH TERRACE**
 B, C, F, G : **STUDIO** Units
 5 : Lift Lobby
 6 : Lift
 1 - 4 : **OPEN TERRACE**

FLOOR PLANS OF SUCHETA , UCHHAS AND PRABHA
 সুচেতা , উচ্ছাস ও প্রভা



- Layout (Ground Floor)
 A, F : **1 BHK - TYPE I**
 B, C, D : **STUDIO** Units
 E : Entrance Lobby
 1 : Lift Lobby
 2 : Lift



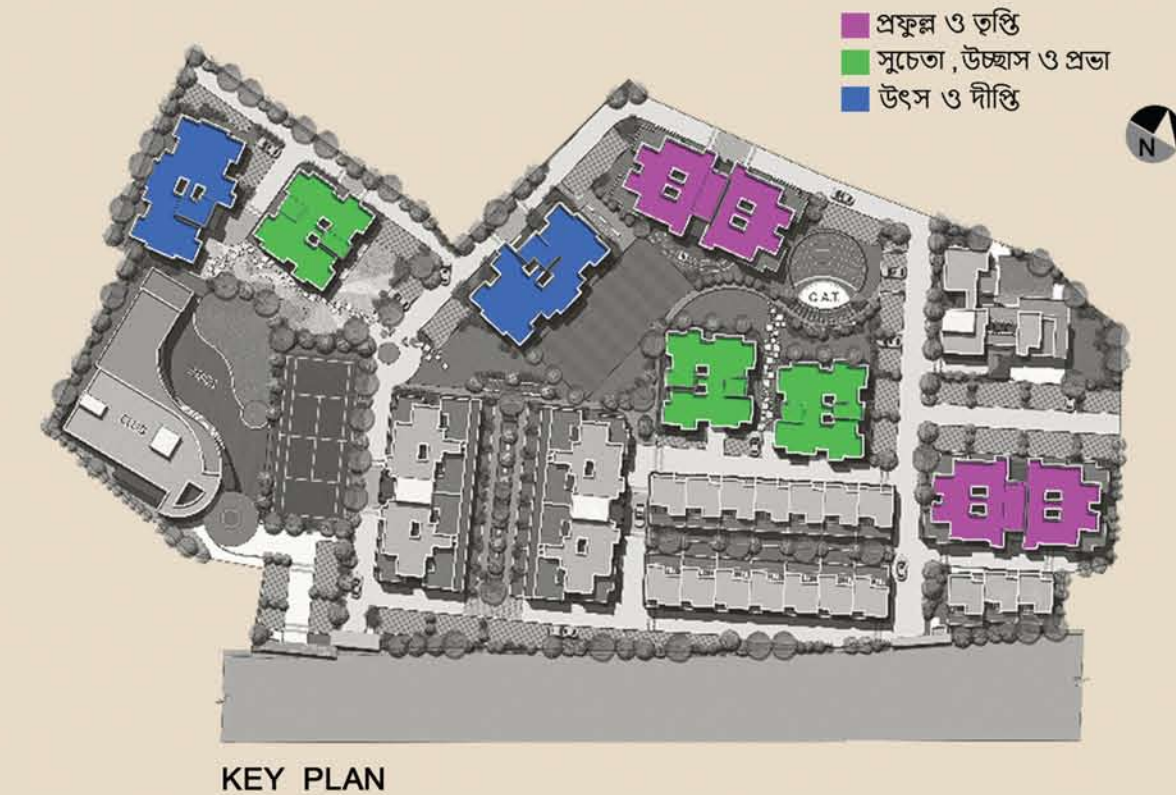
- Layout (1st-4th Floors)
 A, F : **1 BHK - TYPE I**
 B, C, D, E : **STUDIO** Units
 1 : Lift Lobby
 2 : Lift

FLOOR PLANS OF UTSHA AND DIPTI
 উৎস ও দীপ্তি



- Layout
 A, D, E, G : **1 BHK - TYPE II**
 B, C, F : **STUDIO** Units
 1 : Lift Lobby
 2 : Lift

SCALE :
 0 1/2 5Ft



KEY PLAN

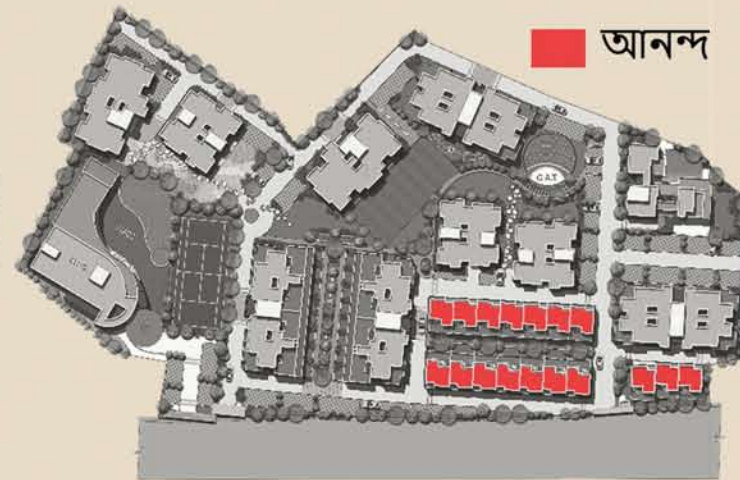


GROUND FLOOR PLAN

ROW BUNGALOW WITH TERRACE

CARPET AREA = 1278 SQ.FT.
 BALCONY -
 GROUND FLOOR = 49 SQ. FT.
 FIRST FLOOR = 101 SQ. FT.

SALEABLE AREA : 1877 SQ. FT
 + TERRACE AREA : 200 SQ.FT.
 PRIVATE LAWN AREA : 229 SQ.FT.



KEY PLAN



ROW BUNGALOW WITH TERRACE



FIRST FLOOR PLAN

1 BHK - TYPE I

CARPET AREA = 399 SQ.FT.
 BALCONY AREA = 35 SQ.FT.
 SALEABLE AREA : 582 SQ. FT.



SECOND FLOOR PLAN



STUDIO

CARPET AREA = 308 SQ.FT.
 BALCONY AREA = 30 SQ.FT.
 SALEABLE AREA : 451 SQ. FT.



SCALE :
 0 1 2 5Ft



1 BHK - TYPE II

CARPET AREA = 408 SQ.FT.
 BALCONY AREA = 33 SQ.FT.
 SALEABLE AREA : 592 SQ. FT.



1 BHK - WITH TERRACE

CARPET AREA = 445 SQ.FT.
 SALEABLE AREA : 594 SQ. FT.
 + TERRACE AREA : 256 SQ.FT.



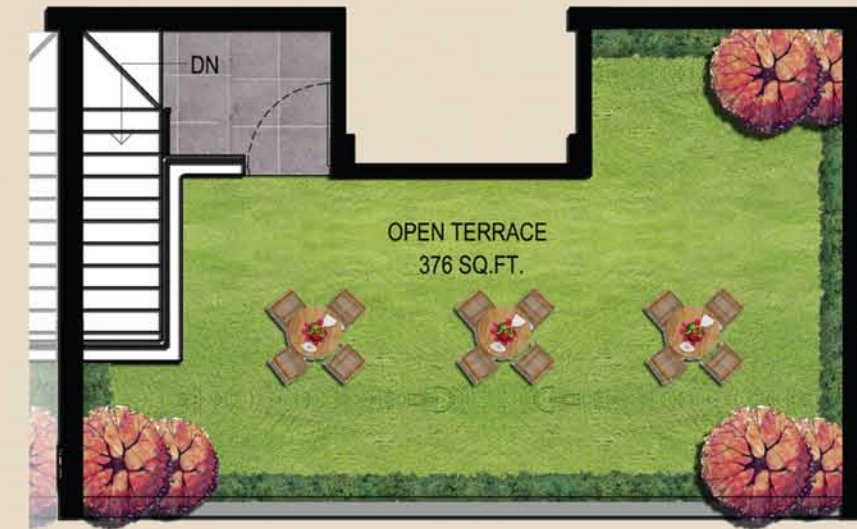
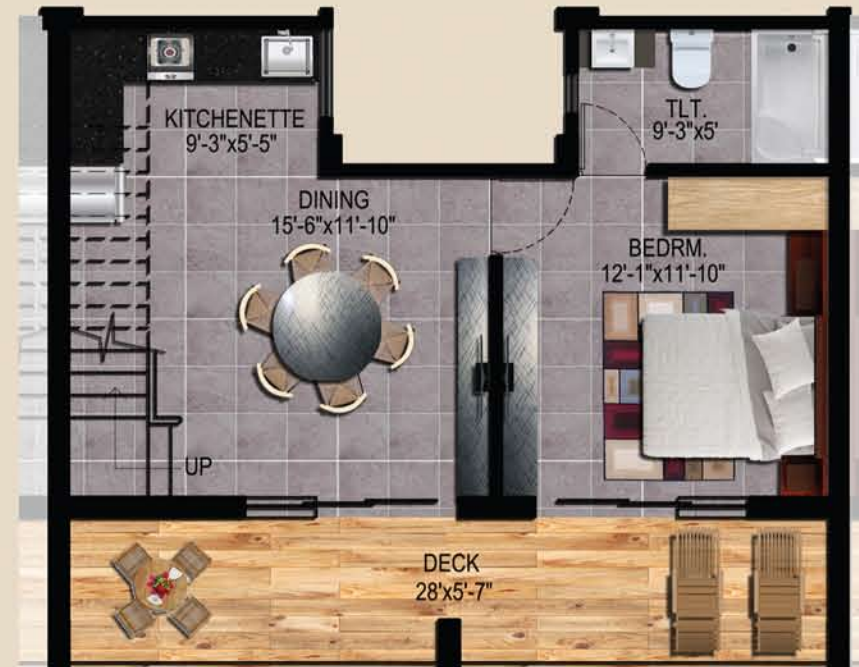
GROUND FLOOR PLAN

DUPLEX WITH PRIVATE LAWN

CARPET AREA = 477 SQ.FT.
 BALCONY AREA = 52 SQ.FT.
 SALEABLE AREA : 715 SQ. FT.
 + PRIVATE LAWN AREA : 150 SQ.FT.



FIRST FLOOR PLAN



DUPLEX WITH TERRACE

CARPET AREA = 926 SQ.FT.
 SALEABLE AREA : 1303 SQ. FT.
 + TERRACE AREA : 376 SQ.FT.
 + DECK AREA : 163 SQ.FT.

SCALE :
 0 1 2 5Ft



Jhinuk Constructions

We Strive to exceed your Expectations

The history of Jhinuk Construction spans over one decade. In a dynamic world where we are in business to create and deliver real value for real people. The group applies insight, experience, intelligence, and resources to help people to make well informed and privileged choice. The actual focus of the group is to build tomorrow, beginning from today...

Developers: **JHINUK CONSTRUCTIONS**
Bolpur Municipal Commercial Complex, Block No. A
Super Market (First Floor), Santiniketan Road, Bolpur, Birbhum.
Phone No. 03463-252512



Alapan
Apartments
60,000 sq.ft.
2011



Appayan
1,45,000 sq.ft.
2016



Porichoy
Apartments
37,000 sq.ft.
2006



Alapan
38,000 sq.ft.
2013



From its humble beginning way back in 2006 through the ever competitive journey, INNATE has been growing as one of the top notch architectural firms in Kolkata. Led by partners Sanjay Mondal and Anirban Bhaduri, Innate has worked with some of the biggest developers in some of the most inspiring and diverse projects. Developing a variety of constructions including Residential, Commercial & Shopping Malls, Institutions, Resorts & Hotels, Logistic Hubs, Industrial Structures, Film Studios and many more.



FORUM GALLERIA
Forum Projects Ltd
Rourkela



ROYAL LAGOON
Ashiana Homes
& S.J. Developes Ltd.
Bhubaneswar



RESIDENTIAL COMPLEX
South City Projects Ltd.
B. L. Saha Road, Kolkata



ADWITA
A Tata Value Homes
& Square Four Group Initiative
Sodepur, Kolkata



BAANGLAR HAAT
A Wbhidco Project
Eco Park, New Town, Kolkata



GREENVILLE HOMES
A Sureka Merlin Initiative
Jajpur, Odisha



MERLIN WATERFRONT
A Merlin Project
Howrah, West Bengal



SINCLAIRS RETREAT
A project by Sinclairs Hotels Ltd
K Kalimpong



UDDIPA
A Joint Initiative By Bengal Ambuja
& Square Four Group
Sodepur, Kolkata



Unwind at Santiniketan



www.jhinukconstructions.in

For bookings Call: 03463-252512, 9434116986, 73841 41433

This brochure is not a legal document nor a legal offering.
It only describes the intent, Purpose and concept of Jhinuk Constructions.